

Wkładki topikowe NH 400V gG

Typ: NH000-NH3

Charakterystyka: gG

Prąd znamionowy: 2-630A

Napięcie znamionowe: 400V AC

Zwarciova zdolność wyłączenia: 100kA

Wg normy: IEC PN 60269-1

Budowa: Korpus ze steatytu, styki miedziane srebrzone, bez zawartości Cd i Pb, pokrywy aluminiowe chwytki w wersji izolowanej i nieizolowanej czujnik zadziałania u góry i z przodu KOMBI

Uwaga: wkładki na 400V AC mają niższe straty mocy niż najpopularniejsze wkładki na 500V



Wkładki topikowe gG 400V AC z podwójnym czujnikiem zadziałania KOMBI

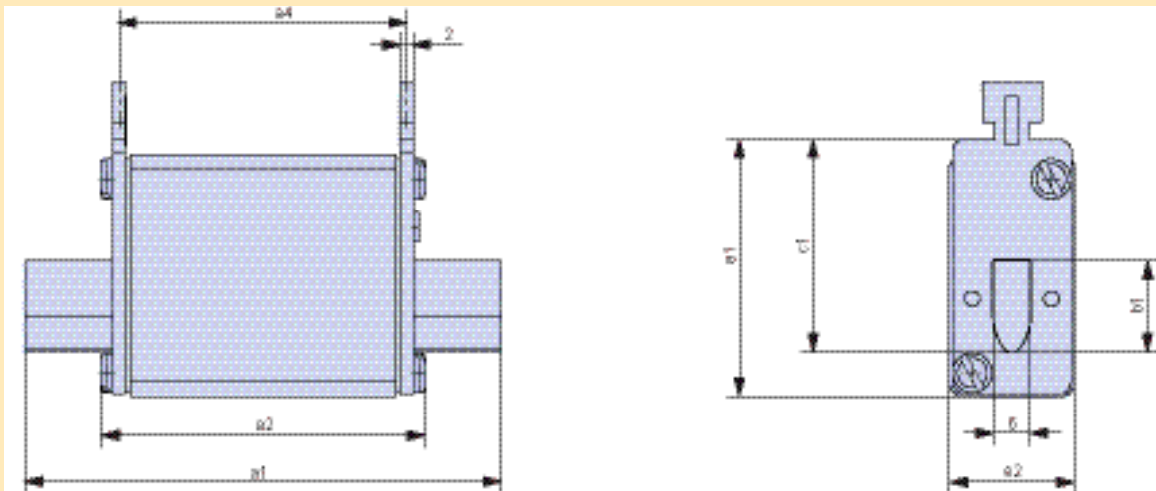
U _n	Wielkość	I _n [A]	Straty mocy P _n [W]	Opakowanie	Uchwyty nieizolowane		Uchwyty izolowane	
					Typ	Nr artykułu	Typ	Nr artykułu
400V	000	2	0,7	3	M000GL2/4	N5000905	M000GL2/4/ISM	N5000907
		4	0,7		M000GL4/4	N5001205	M000GL4/4/ISM	N5001207
		6	0,8		M000GL6/4	N5001405	M000GL6/4/ISM	N5001407
		10	1,1		M000GL10/4	N5001705	M000GL10/4/ISM	N5001707
		16	1,6		M000GL16/4	N5002205	M000GL16/4/ISM	N5002207
		20	1,7		M000GL20/4	N5002405	M000GL20/4/ISM	N5002407
		25	1,9		M000GL25/4	N5002605	M000GL25/4/ISM	N5002607
		32	2,5		M000GL32/4	N5002905	M000GL32/4/ISM	N5002907
		35	3,4		M000GL35/4	N5003105	M000GL35/4/ISM	N5003107
		40	2,9		M000GL40/4	N5003405	M000GL40/4/ISM	N5003407
		50	3,9		M000GL50/4	N5003505	M000GL50/4/ISM	N5003507
		63	4,9		M000GL63/4	N5003805	M000GL63/4/ISM	N5003807
		80	5,1		M000GL80/4	N5004105	M000GL80/4/ISM	N5004107
		100	5,5		M000GL100/4	N5004305	M000GL100/4/ISM	N5004307
	00	125	8,1	3	M00GL125/4	N5004605	M00GL125/4/ISM	N5004607
		160	10,0		M00GL160/4	N5004905	M00GL160/4/ISM	N5004907

Wkładki topikowe gG 400V AC z podwójnym czujnikiem zadziałania KOMBI

U _n	Wielkość	I _n [A]	Strata mocy P _n [W]	Opakowanie	Uchwyty niezolowane		Uchwyty izolowane	
					Typ	Nr artykułu	Typ	Nr artykułu
400V	1	25	3,3	3	M1GL25/4	N1002605	M1GL25/4/ISM	N1002607
		32	3,6		M1GL32/4	N1002905	M1GL32/4/ISM	N1002907
		35	4,5		M1GL35/4	N1003105	M1GL35/4/ISM	N1003107
		40	4,4		M1GL40/4	N1003405	M1GL40/4/ISM	N1003407
		50	4,5		M1GL50/4	N1003505	M1GL50/4/ISM	N1003507
		63	5,4		M1GL63/4	N1003805	M1GL63/4/ISM	N1003807
		80	5,4		M1GL80/4	N1004105	M1GL80/4/ISM	N1004107
		100	7,9		M1GL100/4	N1004305	M1GL100/4/ISM	N1004307
		125	8,7		M1GL125/4	N1004605	M1GL125/4/ISM	N1004607
		160	12,3		M1GL160/4	N1004905	M1GL160/4/ISM	N1004907
		200	13,5		M1GL200/4	N1005205	M1GL200/4/ISM	N1005207
		224	15,1		M1GL224/4	N1005305	M1GL224/4/ISM	N1005307
		250	17,2		M1GL250/4	N1005605	M1GL250/4/ISM	N1005607
		2	63		5,5	3	M2GL63/4	N2003805
	80		6,4	M2GL80/4	N2004105		M2GL80/4/ISM	N2004107
	100		7,6	M2GL100/4	N2004305		M2GL100/4/ISM	N2004307
	125		8,7	M2GL125/4	N2004605		M2GL125/4/ISM	N2004607
	160		12,3	M2GL160/4	N2004905		M2GL160/4/ISM	N2004907
	200		13,5	M2GL200/4	N2005205		M2GL200/4/ISM	N2005207
	224		15,4	M2GL224/4	N2005305		M2GL224/4/ISM	N2005307
	250		17,6	M2GL250/4	N2005605		M2GL250/4/ISM	N2005607
	300		20,3	M2GL300/4	N2005805		M2GL300/4/ISM	N2005807
	315		21,9	M2GL315/4	N2005905		M2GL315/4/ISM	N2005907
	3	355	24,8	3	M2GL355/4	N2006005	M2GL355/4/ISM	N2006007
		400	26,3		M2GL400/4	N2006205	M2GL400/4/ISM	N2006207
		200	13,5		M3GL200/4	N3005205	M3GL200/4/ISM	N3005207
		224	15,4		M3GL224/4	N3005305	M3GL224/4/ISM	N3005307
		250	16,0		M3GL250/4	N3005605	M3GL250/4/ISM	N3005607
		300	18,0		M3GL300/4	N3005805	M3GL300/4/ISM	N3005807
		315	19,0		M3GL315/4	N3005905	M3GL315/4/ISM	N3005907
		355	22,0		M3GL355/4	N3006005	M3GL355/4/ISM	N3006007
		400	24,5		M3GL400/4	N3006205	M3GL400/4/ISM	N3006207
		425	28,3		M3GL425/4	N3006305	M3GL425/4/ISM	N3006307
		500	30,0		M3GL500/4	N3006605	M3GL500/4/ISM	N3006607
		630	41,0		M3GL630/4	N3006905	M3GL630/4/ISM	N3006907

Dane techniczne

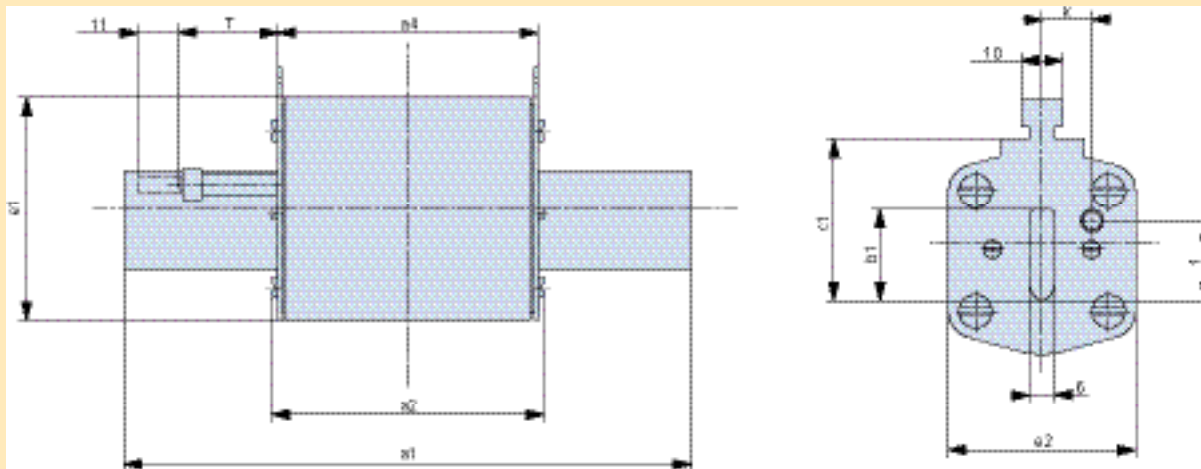
Typ			M000GL.../4	M00GL.../4
Wielkość			NH000	NH00
Napięcie znamionowe	U_n	V	AC400V	
Prąd znamionowy	I_n	A	2-100	125-160
Zwarciova zdolność wyłączenia	-	kA	100	
Charakterystyka			gG	
Normy			IEC/PN 60269-1 DIN VDE 0636-2	
Wymiary	a1	mm	78,5	78,5
	a2		53	53
	a4		49	49
	b1		15	15
	c1		35	35
	e1		43	49
	e2		21	30
Waga	-	g	125	173



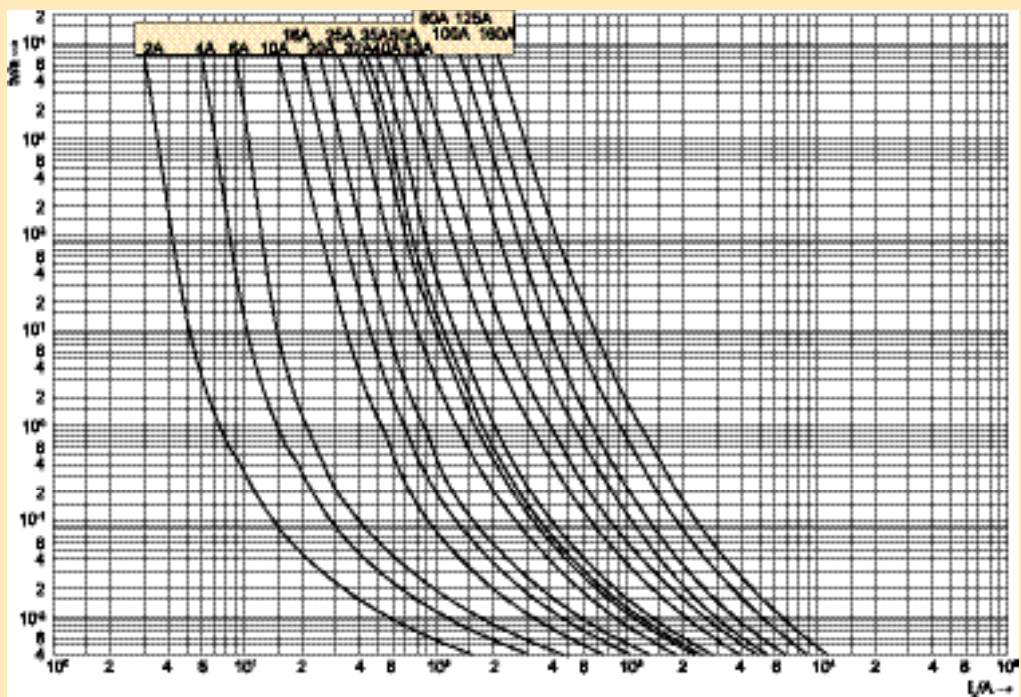
Dane techniczne

Typ			M1GL.../4		M2GL.../4	
Wielkość			NH1		NH2	
Napięcie znamionowe	U_n	V	AC400		AC400	
Prąd znamionowy	I_n	A	6-160	200-250	63-250	300-400
Zwarciova zdolność wyłączenia	-	kA	100		100	
Charakterystyka			gG		gG	
Normy			IEC/PN 60269-1 DIN VDE 0636-2		IEC/PN 60269-1 DIN VDE 0636-2	
Wymiary	a1	mm	135	135	150	150
	a2		68	72	72	72
	a4		67	67	67	67
	b1		15	20	20	26
	c1		40	40	48	48
	e1		50	55	63	63
	e2		28	46	46	54
Waga	-	g	233	430	430	500

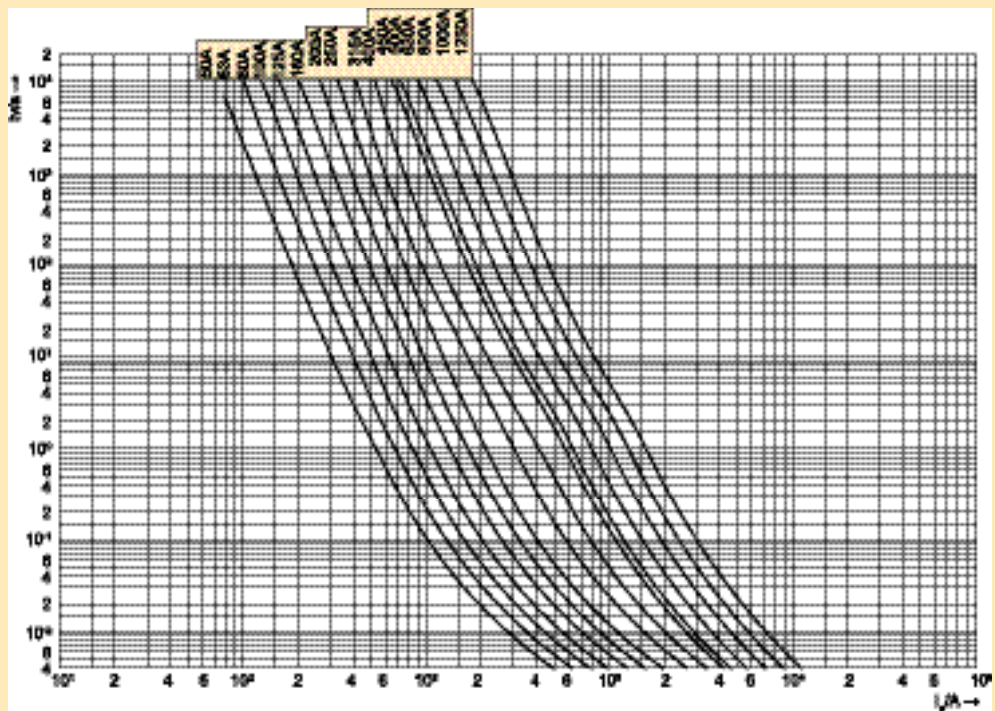
Typ			M3GL.../4	
Wielkość			NH3	
Napięcie znamionowe	U_n	V	AC400	
Prąd znamionowy	I_n	A	250-400	425-630
Zwarciova zdolność wyłączenia	-	kA	100	
Charakterystyka			gG	
Normy			IEC/PN 60269-1 DIN VDE 0636-2	
Wymiary	a1	mm	150	150
	a2		72	72
	a4		67	67
	b1		26	33
	c1		60	60
	e1		74	74
	e2		54	65
Waga	-	g	510	923



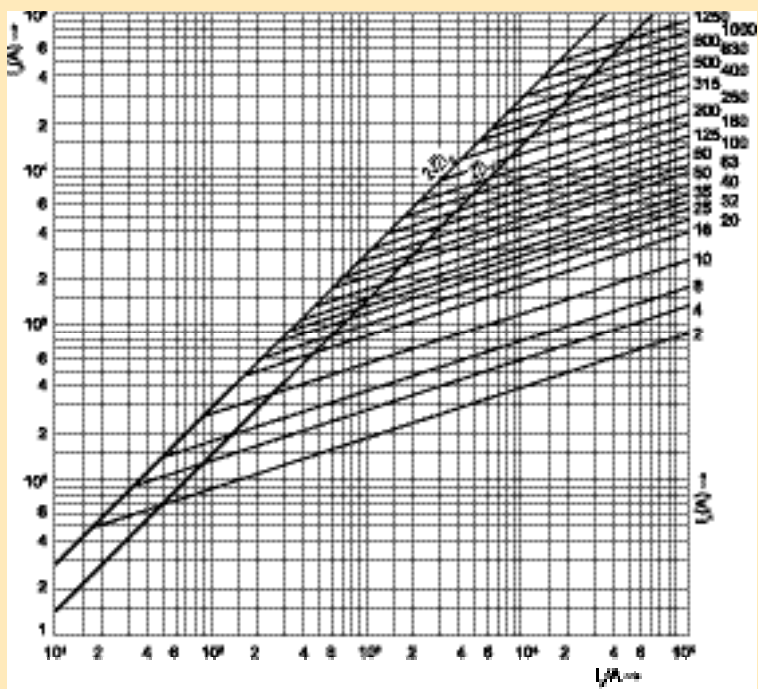
Charakterystyka czasowo-prądowa (2-160A)



Charakterystyka czasowo-prądowa (63-630A)



Charakterystyka prądu ograniczonego



IEC Low Voltage General Purpose Protection

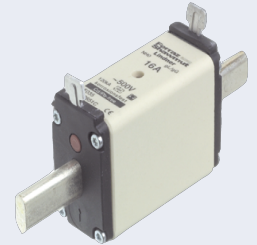
NH fuse-links Plain blades

Sizes 000 to 3 gG 400VAC SGL from 2 to 630A

The NH system is classified among plug-in fuse systems and is composed of:

- fuse-base, (possibly including terminal covers and phase barriers)
- fuse-link with blade contact
- fuse-link replacement device (LV HRC fuse puller)

Since the design of this system cannot guarantee non-interchangeability of rated current, it must be handled by a qualified professional.



Benefits

Dimensions according to DIN 43 620
Parts 1 to 4 standard

Isolated metal gripping lugs (SGL)

Double indicator

Lead free contact blades

Applications

gG: general purpose cable and line protection



Approvals

DIN 57636 Part 201

VDE 0636 Part 201

IEC 60269-1 and -2



Related products

Fuse-holders: NH fuse bases

NH fuse switch disconnectors

IEC Low Voltage General Purpose Protection

NH fuse-links Plain blades

Sizes 000 to 3 gG 400VAC SGL from 2 to 630A



Sizes 000 to 3

Size	Rated Voltage (V)	Nominal Current (A)	Watts Loss @ 100% In (W)	Previous reference	Catalog Number	Reference Number	Weight (g)	Pack.
000	400	2	3.3	1E613.	NH000GG40V2-1	P223688	120	3
000	400	4	1.35	1E619.	NH000GG40V4-1	Q223689	120	3
000	400	6	1.7	1E623.	NH000GG40V6-1	R223690	120	3
000	400	10	1.0	1E631.	NH000GG40V10-1	S223691	120	3
000	400	16	1.8	1E635.	NH000GG40V16-1	T223692	120	9
000	400	20	2.0	1E637.	NH000GG40V20-1	V223693	120	9
000	400	25	2.4	1E639.	NH000GG40V25-1	W223694	120	9
000	400	32	2.6	1E643.	NH000GG40V32-1	X223695	120	9
000	400	35	3.2	1E645.	NH000GG40V35-1	Y223696	120	9
000	400	40	3.1	1E647.	NH000GG40V40-1	Z223697	120	9
000	400	50	3.5	1E651.	NH000GG40V50-1	A223698	120	9
000	400	63	4.6	1E655.	NH000GG40V63-1	B223699	120	9
000	400	80	5.0	1E659.	NH000GG40V80-1	C223700	120	9
000	400	100	5.5	1E663.	NH000GG40V100-1	D223701	120	9
000	400	125	8.6	1E765.	NH00GG40V125-1	G223704	180	3
000	400	160	9.6	1E769.	NH00GG40V160-1	H223705	180	3
1	400	35	3.9	1E145.	NH1GG40V35-1	V223716	280	3
1	400	50	4.5	1E151.	NH1GG40V50-1	W223717	280	3
1	400	63	5.7	1E155.	NH1GG40V63-1	X223718	280	3
1	400	80	5.5	1E159.	NH1GG40V80-1	Y223719	280	3
1	400	100	7.0	1E163.	NH1GG40V100-1	Z223720	280	3
1	400	125	9.1	1E165.	NH1GG40V125-1	A223721	300	3
1	400	160	13.0	1E169.	NH1GG40V160-1	B223722	300	3
1	400	200	13.1	1E171.	NH1GG40V200-1	C223723	300	3
1	400	224	15.1	1E173.	NH1GG40V224-1	D223724	300	3
1	400	250	16.9	1E175.	NH1GG40V250-1	E223725	300	3
2	400	35	3.9	1E245.	NH2GG40V35-1	L227250	187	3
2	400	50	4.5	1E251.	NH2GG40V50-1	M227251	187	3
2	400	63	5.7	1E255.	NH2GG40V63-1	N227252	187	3
2	400	80	6.1	1E259.	NH2GG40V80-1	X223741	320	3
2	400	100	7.3	1E263.	NH2GG40V100-1	Y223742	320	3
2	400	125	9.1	1E265.	NH2GG40V125-1	Z223743	320	3
2	400	160	13.0	1E269.	NH2GG40V160-1	A223744	320	3
2	400	200	13.5	1E271.	NH2GG40V200-1	B223745	320	3
2	400	224	15.1	1E273.	NH2GG40V224-1	C223746	320	3
2	400	250	18.0	1E275.	NH2GG40V250-1	D223747	320	3
2	400	315	19.9	1E279.	NH2GG40V315-1	E223748	400	3
2	400	355	22.7	1E281.	NH2GG40V355-1	F223749	400	3
2	400	400	28.0	1E283.	NH2GG40V400-1	G223750	400	3
3	400	250	19.9	1E375.	NH3GG40V250-1	H223751	450	1
3	400	315	22.7	1E379.	NH3GG40V315-1	J223752	450	1
3	400	400	28.0	1E383.	NH3GG40V400-1	K223753	450	1
3	400	500	30.8	1E387.	NH3GG40V500-1	L223754	600	1
3	400	630	43.0	1E389.	NH3GG40V630-1	M223755	600	1

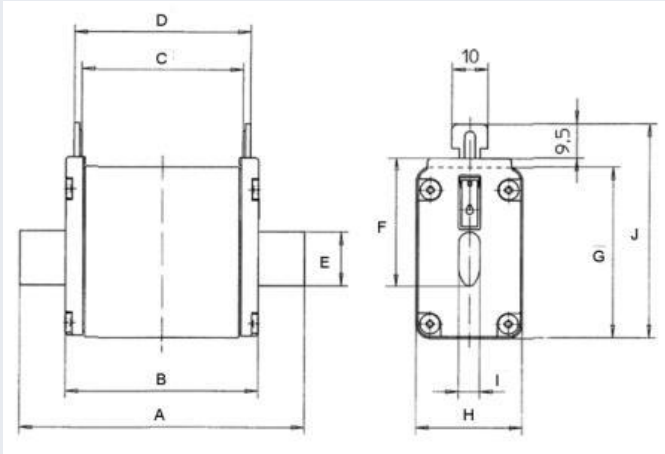
IEC Low Voltage General Purpose Protection

NH fuse-links Plain blades

Sizes 000 to 3 gG 400VAC SGL from 2 to 630A



Dimensions (mm)



Size	Nominal Current (A)	A	B	C	D	E	F	G	H	I	J
000	2-100	78	53.4	45.7	49.7	15	35	40.5	20.8	6	52.5
00	125-160	79	53.5	44.8	49	15	35	47.5	29.5	6	59.5
0	2-160	125	67.5	62.5	62.5	66.7	35	47.5	29.5	6	59.5
1	16-125	135	71.5	62.8	67	15	40	47.5	29.5	6	64.5
1	160-250	135	73.4	63	67.2	20	40	52.5	39.5	6	64.5
2	16-250	150	73.4	63	67.2	20	48	52.5	39.5	6	72.5
2	300-400	150	73.4	63	67.2	26	48	60	51	6	72
3	250-400	150	73.4	63	68	26	60	60	51	6	83.5
3	425-630	150	73.4	63	68	33	60	74	70	6	86

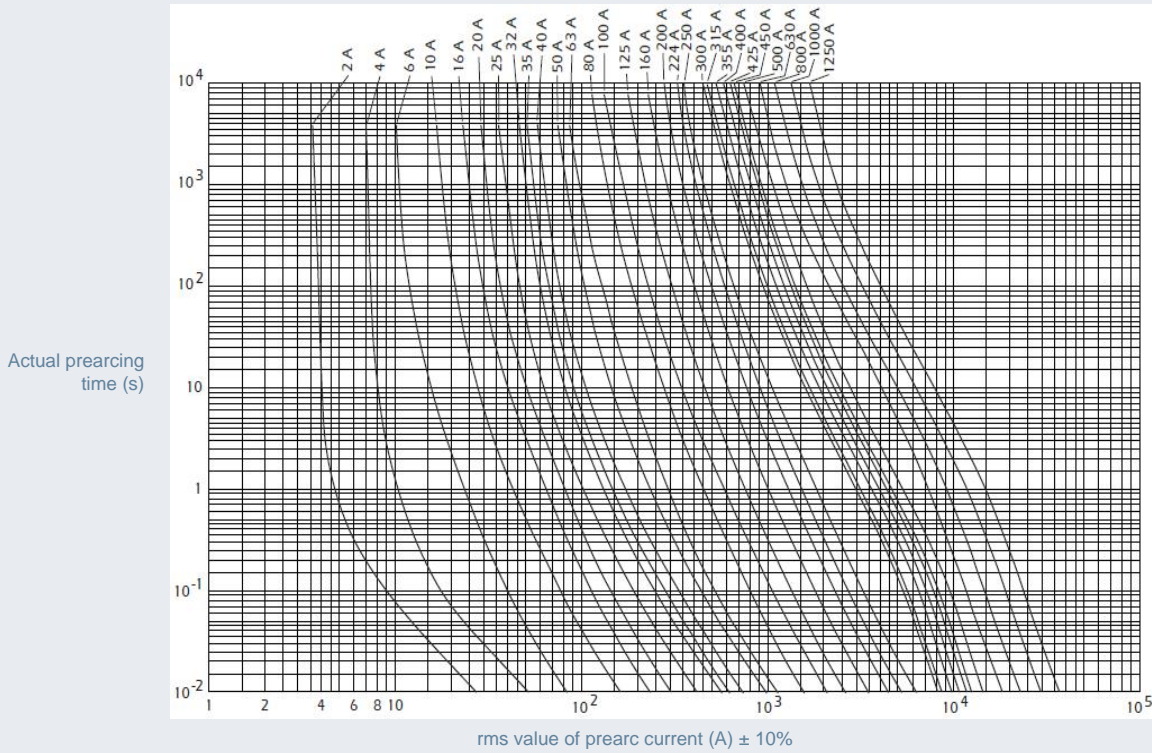
IEC Low Voltage General Purpose Protection

NH fuse-links Plain blades

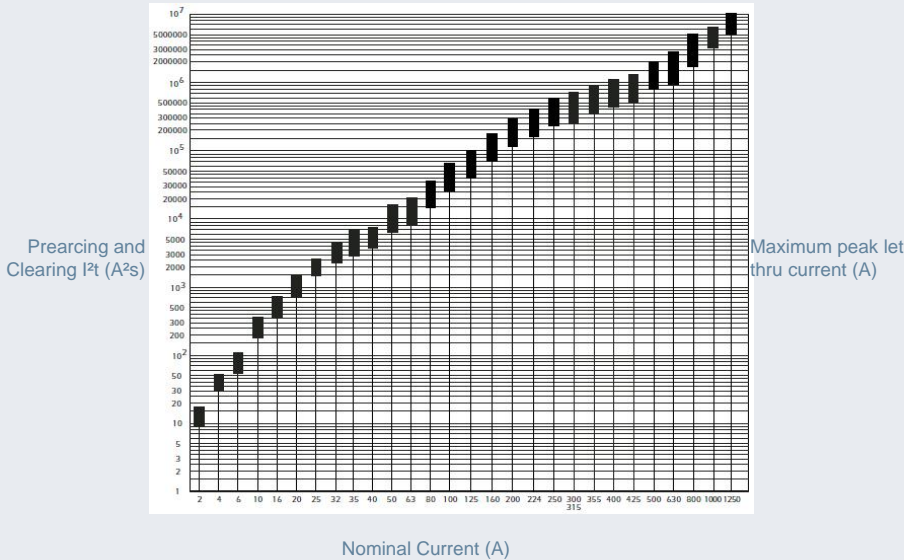
Sizes 000 to 3 gG 400VAC SGL from 2 to 630A



Time current characteristics



Characteristics I²t



Peak let thru characteristics

